

State of Wyoming Corner Record

(in compliance with the CORNER PERPETUATION AND FILING ACT, Wyoming Statutes, 1997, Section 33-29-140, et. seq. and the Rules and Regulations of the Board of Registration for Professional Engineers and Professional Land Surveyors)

Reverse side of this form may be used if more space is needed.

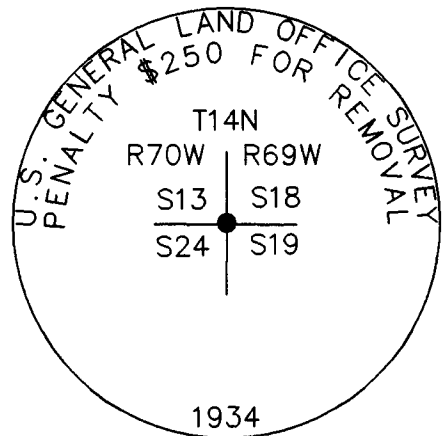
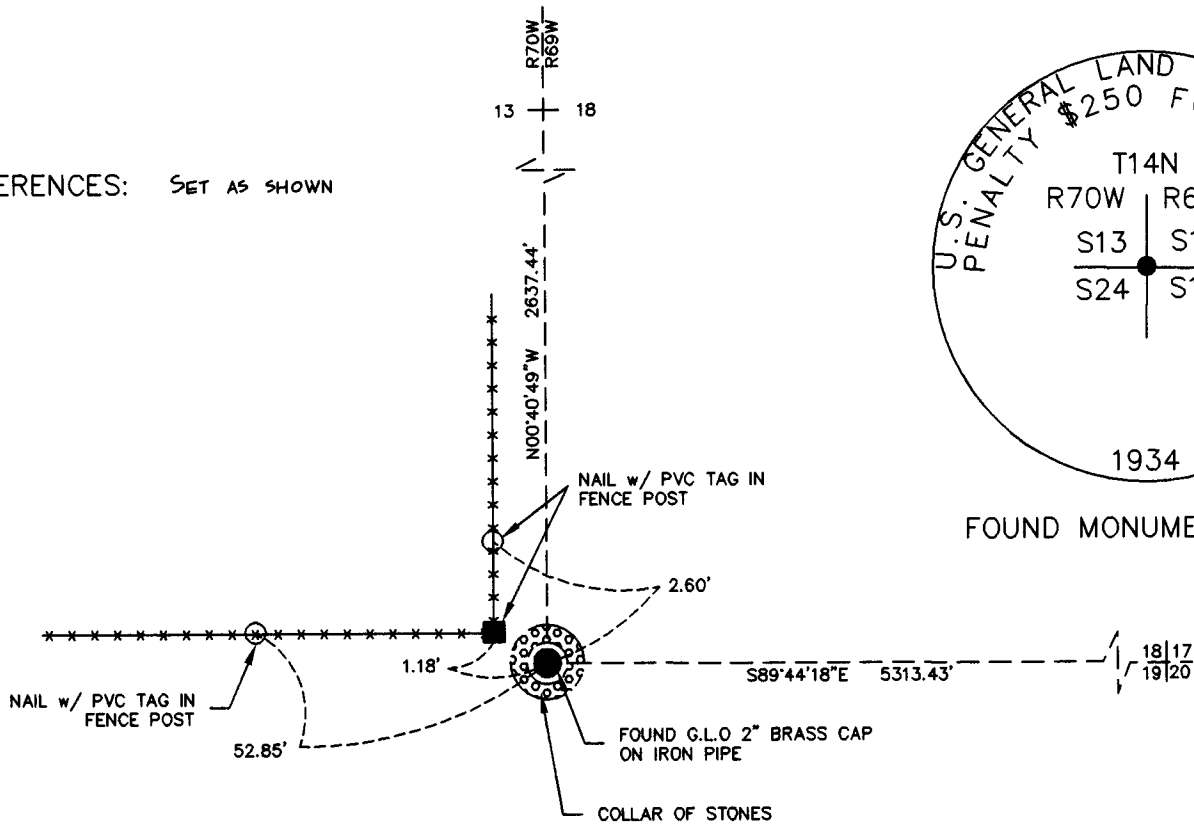
Record of original survey and citation of source of historical information (if corner is lost or obliterated). Description of corner monumentation evidence found and/or monument and accessories established to perpetuate the location of this corner. Sketch of relative location of monument, accessories, and reference points with course and distance to adjacent corner(s) (if determined in this survey). Method and rationale for reestablishment of lost or obliterated corner.

FOUND: FOUND G.L.O. BRASS CAP. IN GOOD CONDITION, SET 0.9' ABOVE GROUND IN A MOUND OF STONES. SET A LATHE & REFERENCED AS SHOWN:
CAP STAMPED AS SHOWN

G.L.O. RECORD: IRON POST, 3' LONG, 2" DIA., 27" IN THE GROUND WITH ORIGINAL STONE ALONG SIDE.

SET: NOTHING

REFERENCES: SET AS SHOWN



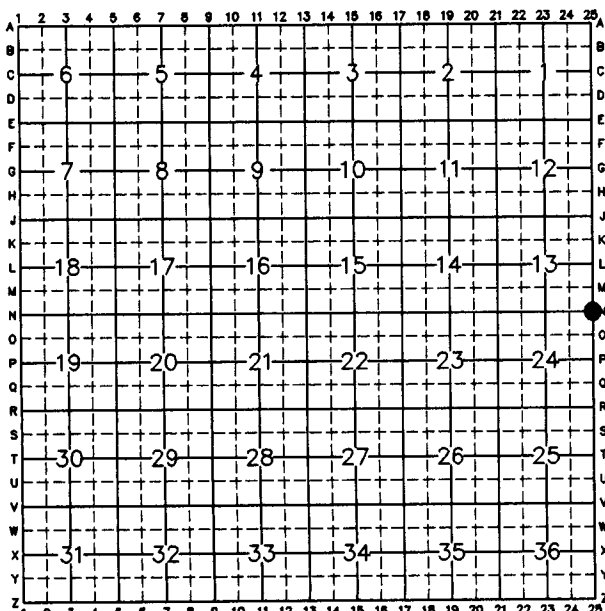
FOUND MONUMENT DETAIL



RECORDED 12/31/2003 AT 1:41 PM REC# 375064 BK# 1784 PG# 1267
DEBRA K. LATHROP, CLERK OF LARAMIE COUNTY, WY PAGE 1 OF 1

Date of Field Work: 12-03 Office Reference: 2-2389.03

CROSS INDEX DIAGRAM

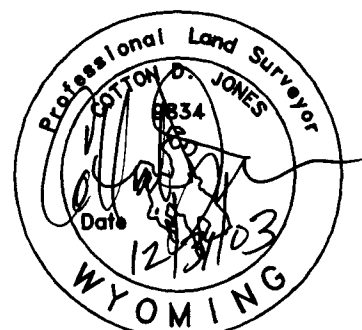


Firm/Agency, Address

Cotton D. Jones, P.L.S.
A.V.I., p.c.
2035 Westland Road
Cheyenne, WY 82001
Telephone Number: (307) 637-6017

This corner record was prepared by me or under my direction and supervision.

SEAL & SIGNATURE



Corner Name: SECTION CORNER Section: 13|18 T14N R70W; 6th P.M. Cross-Index No.: N-25
SBRPEPLS/PLSW: March 1994